

LYON-COFFEY ELECTRIC COOPERATIVE

EVENTS



Lyon-Coffey Electric Cooperative, Inc.

Board of Trustees

David Kunkel
President

George Zentner
Vice President

Richard Schmidt
Secretary

Harvey Raaf
Treasurer

Robert Converse
Trustee

Wayne VanGundy
Trustee

Richard Prather
Trustee

Donna Williams
Trustee

Staff

Scott Whittington
General Manager

Ray Hutson
Assistant Manager

Contact Information

Headquarters:

P.O. Box 229
1013 N. 4th Street
Burlington, KS 66839
620-364-2116

District Office:

P.O. Box 964
2501 W 18th Avenue
Emporia, KS 66801
620-342-0553

FROM THE MANAGER

Keeping the Lights On

We often take electricity for granted. It makes our homes comfortable day-in and day-out, and it's at the ready with little more than the flip of a switch.

What goes on behind the scenes once that switch is thrown is far more complex. The power grid, which can be described as the largest, most complex machine ever built, involves an intricate network of power lines crisscrossing neighborhoods and open country, which has evolved over the last century to supply consumers with safe, reliable and affordable electricity.

The tricky thing about electricity is that it must be used, or moved to where it can be used, the second it's produced; it generally can't be stored like water or gas. What's more, electricity moves at the speed of light along the path of least resistance. This basic principle calls for a carefully monitored, intricate system to move it 24-hours a day.

Literally thousands of power lines span Kansas in a complex series of "highways." These lines can be broken into two main categories:

- ▶ **Transmission**—the high-voltage "super highways" supported by steel towers and other similar structures that move electricity over vast distances; and
- ▶ **Distribution**—the "local roads" that run through small towns and farms and into homes and businesses.

Lyon-Coffey Electric alone has its

own sizeable distribution system to maintain. Our team stays busy keeping nearly 2,500 miles of line up and running, 24/7.

When there's a problem somewhere on our system, a power outage typically results. Pinpointing the cause of an outage among those thousands of miles of line may seem like trying to find a needle in a haystack, but Lyon-Coffey employees have boiled it down to a science.

To understand how co-op staff restores power during an outage, think of electricity distribution like a river in reverse. It originates at a single ocean of power—a generation plant—and diverges from there into a series of transmission lines, substations, and smaller feeder lines until it reaches homes and businesses at a trickle of its original strength. So when we start assessing storm damage, we work to fix the biggest problems first (those starting near the "ocean"), prioritizing repairs according to how they can get the most homes back in service the fastest.

It's a big job, but our line crews are up to the challenge. If there is an outage in your area, you can help crews pinpoint damage by calling us at 800-748-7379. Even if your neighbors have already called, every bit of information we have helps get the river flowing smoothly again.



Scott Whittington

“Something Old, Something New”

130th Coffey County Fair The Longest Consecutive Running Fair in Kansas

Kelley Park in Burlington

JULY 16

- ▶ WildBlue BBQ Cook off at Kelley Park

JULY 17

- ▶ 9 a.m.–Horse Show at Rodeo Arena in Kelley Park
- ▶ 4 p.m.–Rodeo sponsored by Lazy 8 Cattle Company
- ▶ WildBlue BBQ Cook off at Kelley Park

JULY 24

- ▶ 7 p.m.–FHTPA/MSTPA Truck/Tractor Pull, Grandstands
- ▶ 9 a.m.–9 p.m.–Exhibit buildings open to public

JULY 28

- ▶ 4 p.m.–Food Sale, 4-H Building
- ▶ 6:30 p.m.–Dog, Cat & Hand Pet Show, Show Arena
- ▶ 7 p.m.–Talent Show, Grandstands

JULY 29

- ▶ 1 p.m.–Bucket Calf Show, Show Arena
- ▶ 5 p.m.–Sheep & Goat Show, Show Arena
- ▶ 7 p.m.–Pedal Power Tractor Pull, Grandstands (Ages 4-12)

JULY 30

- ▶ 9 a.m.–Beef Show, Show Arena
Dairy Cow and Goat Show immediately following Beef Show
- ▶ 3 p.m.–9 p.m.–Entertainment by Little Apple Amusement
- ▶ 6 p.m.–Parade
Sweet 6 & 16 Contest, Grandstands
- ▶ 8 p.m.–Old Fashioned Horse Pull, Grandstands
Parade of Purples Style Revue on the lawn

JULY 31

- ▶ 7-9 a.m.–Central National Bank Breakfast, under Grandstands
- ▶ 8:30 a.m.–Swine Show, Show Arena
- ▶ 3-9 p.m.–Entertainment by Little Apple Amusement
- ▶ 6 p.m.–Demolition Derby, Grandstands

AUGUST 1

- ▶ 9 a.m.–3 p.m.–Automobile Show, West side of fairgrounds
- ▶ 9:30 a.m.–Worship Service, Show Arena
- ▶ 1 p.m.–Hot Wheels Racing, Crow Moddie Ford parking lot
Bale Toss north of Swine Bldg
- ▶ 5 p.m.–Trophy Presentation, Show Arena
- ▶ 5:30 p.m.–Bucket Calf Scramble, Show Arena
- ▶ 6 p.m.–Livestock Sale, Show Arena

Cooperative Fees Increasing July 1

Some of the fees charged by Lyon-Coffey Electric are increasing.

Those increasing include collection, disconnect and re-connection fees charged when an electric service is delinquent and the hourly charge for a service call.

Beginning July 1, 2010, collection, disconnect and re-connection charges will each be \$50. If a lineman makes a trip to collect your bill, your service is disconnected for non-payment, or service is reconnected following disconnection for non-pay, each trip will cost \$50.

If your service is disconnected for non-payment you will be required to pay the total of any amount unpaid that has been billed plus \$100 to get your service restored.

If you do not already have a security deposit or an increase is needed in your current security deposit, it will

Fees Effective July 1

Membership Fee	\$25
Collection Fee	\$50
Disconnect Fee	\$50
Reconnect Fee	\$50
Returned Check	\$30
Meter Tampering Fee	\$250 minimum plus time & material
House Moving, etc	Actual cost
Removing, Relocating Coop Facilities	Actual cost
Service Charge Fee	\$75 per hour during normal working hours
Service Call for outage on member's side (after hours)	\$200 minimum
Security light service call (member owned)	\$20 plus material

also have to be paid before service can be restored. The service charge fee is also increasing from \$65 to \$75 per hour during normal working hours. Charges for a service call for a power outage on the member's side after hours will be \$200 minimum.

New Employees Join Lyon-Coffey Electric

Lyon-Coffey Electric would like to welcome **MASON FLEMING** and **HEATH NICHOLS** to the cooperative family this summer.



Mason Fleming



Heath Nichols

agement Agency (FEMA) projects.

Heath Nichols is working this summer as a student intern from Manhattan Area Technical

Mason Fleming has been hired as a temporary contract employee to work on the Federal Emergency Man-

College (MATC).

We are excited about having both young men as part of our crews.



Energy Efficiency

Tip of the Month

Heat from sunlight coming through windows and hitting the roof can increase air conditioner use significantly. Use shade trees and shrubs in landscaping design to reduce cooling costs. Block heat in the summer—but let it through in the winter—with deciduous trees, which will lose their leaves in the winter.

Source: U.S. Department of Energy

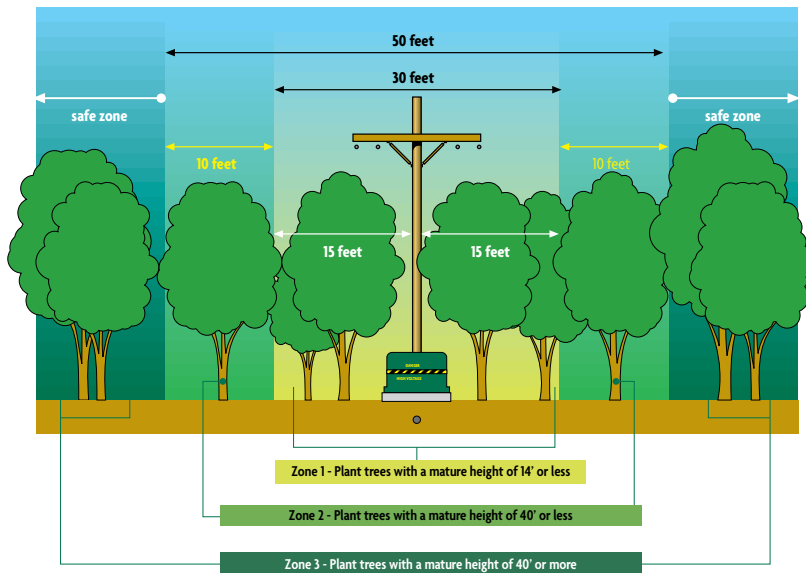
Planting the Right Tree in the Right Place

There are many environmental and beautification benefits to planting young trees. However, Lyon-Coffey wants to remind everyone to be aware of electrical hazards while planting this year. Always seek help from professionals when choosing and placing trees and bushes.

Trees that grow too close to electric lines can create shock and fire hazards as well as power outages. More importantly, children can become victims of electric shock when they climb trees that have grown too close to the power lines as well. Trees growing into power lines can also create electrical hazards for people who might be trimming branches, hanging lights or otherwise working around them.

Trees provide many aesthetic, environmental and economic benefits. Everyone needs to be aware of the dangers and risks created when trees grow into power lines, and the importance of calling 811 for Kansas One Call before beginning any landscaping project.

Take the time to research tree selections by consulting your local arborist, tree nursery or utility. These experts can provide assistance in designing a beautiful, shade-filled yard with trees appropriate for each area of the landscape. With their help, trees



can provide economical cooling in the summer, and a wind-break for harsh winter winds.

Additionally, trees help combat the effects of pollution by absorbing carbon dioxide (CO₂). When trees grow, they take energy from the sun and combine it with CO₂ from the air to photosynthesize. This makes trees a natural “carbon sink” or a living source of carbon reduction. Some trees are better suited for this task than others. According to the U.S. Department of Energy (DOE), tree species that grow quickly and live long are ideal carbon sinks.

Choosing the right tree for the right place is crucial, especially when it comes to power lines. Trees and wood in general can potentially conduct

Continued on page 16-D ▶

Zone 3—mature height of 40' or more

American Elm			NW	SW
American Linden	C	E	NW	SW
Austrian Pine	C			
Bald Cypress	C	E		SW
Bur Oak	C	E	NW	SW
Catalpa			NW	
Chinkapin Oak			NW	SW
Colorado Blue Spruce			NW	
Easter Redcedar			NW	
Ginkgo	C	E		SW
Green Ash	C	E		
Hackberry	C	E	NW	SW
Honeylocust	C	E	NW	
Kentucky Coffeetree	C	E	NW	SW
Lacebark Elm	C	E		
Ponderosa Pine			NW	SW
Red Maple	C	E		SW
Red Oak	C	E		
Sawtooth Oak	C	E	NW	SW
Southwestern White Pine		E	NW	SW

Zone 2—mature height of 40' or less

American Hornbeam		E		
American Yellowwood		E		
Black Hills Spruce	C	E		
Caddo Sugar Maple			NW	
Callery Pear	C	E	NW	SW
Canada Red Cherry		E	NW	
Chinese Juniper	C	E	NW	SW
Eastern Red Cedar	C	E		
Eastern Redbud	C	E		
Goldenraintree	C	E	NW	SW
Lacebark Elm			NW	
Limber Pine	C	E	NW	
Littleleaf Linden			NW	
Osage Orange	C	E	NW	SW
River Birch			NW	
Sweet Bay Magnolia		E		
Trident Maple	C	E		SW
Western Soapberry		E		SW
White Mulberry	C			

Zone 1—mature height of 14' or less

American Plum	C	E		
Amur Maple	C	E		SW
Cockspur Hawthorne	C	E	NW	SW
Crabapple Species	C	E	NW	SW
Flowering Dogwood		E		
Pinyon Pine	C	E	NW	SW
Redbud	C	E	NW	SW
Star Magnolia		E		
Washington Hawthorne			NW	
White Fringetree		E		
Winterberry Euonymus	C	E		

Preferred trees for central (C), eastern (E), northwest (NW) and southwest (SW) Kansas.

Home Electrical System Overload

The long days of summer bring hot and humid temperatures to Kansas. Higher temperatures increase the need for cooling indoors all day long. Increased electrical use increases the risk of fire in homes with older or damaged wiring systems. Air conditioning and home cooling demands during long periods of hot weather can strain and overload a home's electrical system, a serious shock and fire hazard.

Lyon-Coffey's highest demand for electricity typically occurs during the summer months with the vast majority occurring in July and August.

Underwriters Laboratories estimates more than one-third of houses in the United States are more than 50 years old. Considering the increase in appliance usage and related electrical demands over the past half century, many older homes are not adequately wired to handle and support the increased demands.

Outdated wiring can overheat due to the increased loads required to run the appliances typically found in today's homes. If the wiring is deteriorating or crumbling, it can damage its own insulation, putting the system at risk for fire.

In order to help protect your home and loved ones, watch for these warning signs:

- ▶ Lights often flicker, blink or dim momentarily



If the wiring is deteriorating or crumbling it can damage its own insulation, putting the system at risk for fire.

- ▶ Circuit breakers trip or fuses blow often
- ▶ Cords or wall plates are warm to the touch or discolored
- ▶ Crackling, sizzling, or buzzing is heard from outlets
- ▶ If you have any of these present, you should have your home inspected by a professional.

A home electrical inspection to find and correct hidden hazards could prevent many tragedies. The time and investment in having a qualified electrician check your residence, and perform a few home repairs and upgrades, are small in comparison to the protection and safety they provide to your family and home.

An electrical system inspection for all dwellings 40 years old or older, and when purchasing a previously-owned home, is recommended. You should also have an inspection when you have had a major renovation, if you have added major new appliances in the last 10 years or have extension cords or power strips permanently in use.

For more information, visit www.SafeElectricity.org.

Planting the Right Tree...

Continued from page 16-C ▶

electricity and create a safety hazard if grown close to electric lines. Power outages or momentary interruptions can occur when branches come into contact with overhead lines. Electrical arcing and sparking from a wire to a nearby branch can also cause fires.

Keep in mind the expected heights when you purchase trees to plant this year. Just because a tree is far from the power line right now, doesn't mean it always will be. If you have trees that appear to be growing into power lines, contact Lyon-Coffey. Never try to prune them yourself.

▶ Consider mature height of trees.

Never plant a tree near a power line that could grow within 25 feet of it. Tall growing trees should be planted a minimum of 20 feet away from power lines, and 50 feet away to avoid future pruning. A mature height of less than 15 feet is recommended for trees planted near power lines.

▶ **Do not plant near underground utility services.** Tree roots can grow to interfere with underground pipes, cables and wires. Future repairs to these facilities also could damage the health and beauty of nearby plants and trees, or even require removal.

▶ **Keep areas around electric meters, transformers or other electrical equipment free of any vegetation** that could limit utility service access.

▶ **Before digging,** call 811 for Kansas One Call to mark the location of underground utilities so that accidental contact, damage and injuries can be avoided.

There are many beautiful varieties of low-growing trees and shrubs that provide color, screening and shade, and enhance the quality of life in our communities and environment. Consider the types of trees that co-exist well with power lines and the environment to avoid the need for trimming for line clearance.